

STANDARD OPERATIONAL PROCEDURES

SENSORLAB PROCEDURE # 1

DATA WIPEOUT PROCEDURE

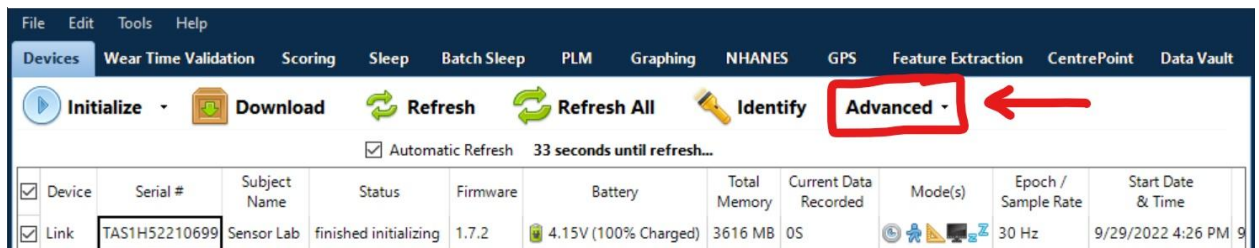
IMPORTANCE

It is essential to properly erase all personal and research information every time before returning your equipment. This is to ensure that it cannot be accessed by anyone else, either accidentally or maliciously.

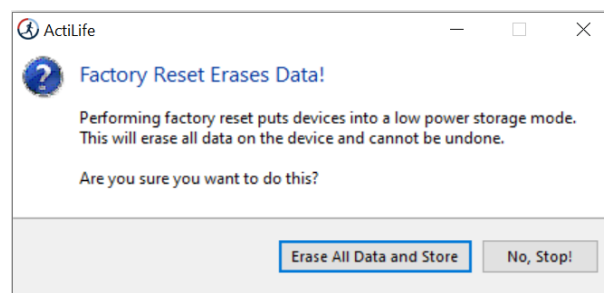
ActiGraph GT9X

To erase all data from ActiGraph GT9X

1. Open the ActiLife software.
2. Connect the ActiGraph Link to the PC using the Link dock. The monitor will appear in the grid under the **'Devices'** tab.
3. Under the **'Devices'** option choose **'Advanced'** which is the sixth option.



4. Under **'Advanced'** choose **'Factory Reset'**, then **'Erase All Data and Store'**.



SENSORLAB PROCEDURE # 1 - DATA WIPEOUT PROCEDURE - Version: v1

Author: Qusai Almustafa

Date: 9/30/2022

Approved by: Gustavo Almeida

Date of Approval: 9/30/2022